



RINGWOOD AND BURLEY BAND

NEWSLETTER

DECEMBER 2011



A collage of pictures of engagements we have undertaken during the past summer



The
Band
Supporters
Club runs a
Weekly
Draw
Details from
Margaret
Or Tony
Mist
Telephone
01425
473542





And a Happy and Prosperous
New Year
From The members of
THE RINGWOOD AND BURLEY
BAND
To all our friends and



2011

Our summer programme started on May 21st with our participation in the Greyfriars Pre-school Groups fiftieth anniversary celebrations when the band played music to entertain the younger members celebrating the occasion. June 25th our first Sailaway of the summer at Southampton Docks for P&O, the cruise liner Ventura.

This was followed on July 1st with Brass on the Grass on the lawn at Greyfriars with a fair sized audience in attendance.

July 9th another Sailaway from Southampton, this time the cruise liner Oceana.

A whole day, August 13th spent playing at Ellingham Show in Somerley Park, a long but successful day with many of the visitors listening to the band.

An engagement in Burley for the band on Sunday 4th September, a concert on the cricket field for the Burley Branch of the Royal British Legion to celebrate the organisations 90th anniversary, the weather a bit doubtful early in the morning but after some rain it was a fine sunny day with a large crowd enjoying the occasion.

Sunday 11th September a Songs of Praise Evening in Ringwood Parish Church, the band played a short programme before the service and then the hymns during the service, we were joined on this occasion by musicians from the Ringwood Salvation Army Ringwood Carnival on September 17th, we were in our usual position outside Greyfriars in the evening, but our performance was curtailed due to a heavy rain storm.

On Friday September 23rd we gave an invitation concert which included refreshments for the companies who sponsor the band, people and firms who sponsor individual players and also our Vice Presidents, a disappointingly small audience for this event.

Another full day engagement on 5th September when we were once again at the Beaulieu Caravan Show, a long day but an enjoyable one for the members of the band.

We were once more on the quayside at Southampton on 15th October to play the cruise liner Oceana away.

Participation in the launching of the British Legion Poppy Appeal in Ringwood on 29th October, a fine day and a good number of people listening to the bands programme.

On Remembrance Sunday we were in our usual place in Burley village for a well supported ceremony, the Last Post and Reveille was competently played by our principal cornet Gayle Pipe.

Our last engagement before the Christmas programme began was a concert in Broadstone Methodist Church a second visit by the band at an excellent venue.



RESOUNDING BRASS

Our annual concert at the Barrington Theatre in Ferndown is one of our most important fund raising events.

The Concert on October 8th this year was entitled "Resounding Brass" this was organised and promoted by the band with the help of the Ringwood and Fordingbridge Lions Club and the Ringwood Tuesday Club it was a great success, the theatre was well filled and the audience enjoyed the evenings entertainment.

During the course of the evening two of the younger members of the band competently performed solos, Hannah Griffen on the Flugel Horn with "I don't know how to love him" and Vicky Rayner played the well known hymn "Amazing Grace" on the Cornet, Peter Curtiss one of our front row Cornet players gave us a Trumpet solo with Purcells "Trumpet Tune"

We also had two guest artistes on the programme, Paul Hammond on the Classical Guitar with some delightful Spanish music and soprano Val Davies who once again entertained with some well known standard songs.

ALAN FARGE

A speedy recovery to our Repiano Cornet player Alan Farge who took a tumble off a ladder and has broken a bone in his arm, get well soon Alan.

YOUNG SOLOISTS



HANNAH GRIFFIN

Hannah who plays the Flugel Horn is the youngest member of the band, in many of our performances this year she has been featured as a soloist, Hannah is a member of a family very much involved in the brass band movement, her mother Sue also plays the Flugel Horn for us, her brother Jonathan is in our Euphonium section and her father Tim plays Bass for another band in Dorset.



VICKY RAYNER

Vicky who is one of the younger members of our band has also been featured as a cornet soloist at many of our engagements during this summer, Vicky's family are well known in the local brass band world, and play with other brass bands in the area, Vicky is the daughter of John Rayner who is the Musical Director of the Wilton British Legion Band, John also joins our Bass section whenever he is available.

BAND MEMBERS

SPONSORSHIP SCHEME

The Sponsorship Scheme has been a success, the majority of the playing members of the band have been sponsored throughout the past year, Our thanks to the participating sponsors

SUMMER SAILAWAYS



We were again fortunate enough to have been allocated Cruise Ship playaways during this summer, we had three dates on the quayside at Southampton Docks to play the cruise liners *Oceana* and *Ventura* away on their voyages. These engagements are a very important source of income to the band.

THE BAND'S SECRETARY

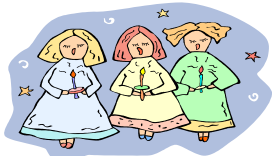
If you need information on the band or updates on engagements contact Christine Harris (01202) 877515.

Christineband@btinternet.com



PRACTICE EVENINGS

Please feel free to call in and listen to our rehearsal on any Friday evening between 8 and 10 pm in the Ebenezer Hall at Greyfriars in Ringwood. New and prospective members always welcome.



CHRISTMAS CAROLLING

The band will be playing carols at various venues during the Christmas period, including Burley and Ringwood

CONCERT AT NEW VENUE

We will be giving a concert at St. Francis of Assisi Church in Charminster on Saturday 10th December at 7 pm

OUR ENGAGEMENTS OVER THE CHRISTMAS PERIOD

Friday 2 nd December	Carol Concert, New Milton Conservative Club	8 pm
Saturday 3 rd December	Carol playing, outside Meeting House, Ringwood	10 am-2-30 pm
Saturday 10 th December	Music for Christmas at St. Francis of Assisi Church, Charminster	7 pm
Tuesday 13 th December	Ringwood Conservative Club	7-30 pm
Saturday 17 th December	Annual Carol Concert, Greyfriars, Ringwood	7-30 pm
Tuesday 20 th December	Burley Carols	7-30 pm
Saturday 24 th December	Carols for Rotary Club	

CHECK OUT

OUR WEBSITE

Information on the band can be found on our website designed and sponsored by Seemore Graphics of Ringwood.

Ringwoodandburleyband.co.uk

COMPANY SUPPORT

FOR THE BAND

Ringwood Brewery, Seemore Graphics, Ringwood Co-operative Funeralcare and the Raymond Brown Group of Companies continue to support the band, our thanks to these companies.

Our thanks also to Mr. Michael Thierry publisher of the Ringwood and Fordingbridge News for the support he gives the band.

BAND NEWSLETTER

Our Newsletter is produced twice a year, in the summer and again during the Christmas period.

We welcome contributions, please send your copy to our Secretary.

If you no longer wish to receive the Newsletter please inform the Band Secretary

We still have a vacancy for

**A Bb Bass player,
a Soprano Cornet
also a Baritone**

additional cornet players would be welcome



THE BAND AT BURLEY FOR THE BRITISH LEGION CONCERT

CLIFF'S JOURNEY OF A LIFETIME

It has always been an ambition of mine to cycle from Lands End to John O Groats, and as I was not getting any younger, I felt the time had come to take up the challenge. I decided to start on Sunday 18th June 2011, so Wilma and I loaded the bike on the back of the car, and set off to Lands End.

We arrived in the afternoon and I cycled to Hayle where I met up with Wilma and stayed overnight in the Travel Lodge. My first full day involved cycling to Launceston, a distance of 70-80 miles – in the rain and wind!!! When I eventually arrived, I collapsed on the bed and thought I would never be able to do another day! However, in the morning, I was ready to go again. I found that, as the trip went on, I became stronger and stronger, so much so that by the second week, I usually went out for a walk when I had reached my destination for the day.



A pattern was established, in that I would cycle all day and meet up with Wilma in the evening. After leaving Launceston, I continued through Devon, over the bridge at Bristol to Chepstow. I stopped at Monmouth, then on through Hereford, Shrewsbury, Preston and up to Kendal and the Lake District, at this point, Wilma had to leave to go to her family in Edinburgh, so I was now on my own. I carried on through Carlisle, Dumfries, Glasgow, Crianlarich and into the Highlands. It was here that the scenery became breathtaking, and the roads much quieter. Wilma booked bed & breakfast accommodation from Edinburgh.

Everyone had told me that Devon and Cornwall were the hardest parts, and this proved to be the case. In Scotland, the roads tend to go through the valleys and not over the top of the hills. After Crianlarich, I cycled to Fort William, Beauly, Dingwall, Brora, Wick and then to John O Groats.

There were some very steep hills on the east coast of Scotland.



I felt a real sense of achievement, especially as I was on my own for a good part of the journey, and also that I had used my mountain bike with wide tyres and was carrying luggage.

When I finished, I said it was too much hard work to be enjoyable, but now I wouldn't mind doing something similar in the future.

It took me 2 weeks, which is not a world record, but not bad in view of the above, and a great experience.

Cliff Brock pictured left is our solo horn player

BANDS

MUTUAL AID

Mainly due to holidays and work commitments during the course of the summer we have had help fulfilling some of our engagements from members of other bands, mainly Wilton British Legion and Ferndown Concert Brass, our thanks to both of these bands for their help, we have also been able to help these bands when they have been short of players.



Annual

CHRISTMAS CONCERT

GREYFRIARS HALL

On

SATURDAY 17TH DECEMBER 2011

At 7.30 pm

ADMISSION £6

Including refreshments